

**PUSH
YOUR
SKILL**

GO TO →

ZOTAC-CUP.COM

ZOTAC GAMING






ZOTAC[®]
ZOTAC.COM

LIVE TO GAME

MEK ULTRA
PC GAMING SYSTEM

**USER'S
MANUAL**



-  facebook.com/zotac
-  twitter.com/zotac
-  youtube.com/zotac_official
-  vimeo.com/zotac
-  instagram.com/zotac_official



ZOTAC GAMING MEK ULTRA PC GAMING SYSTEM

User's Manual



No part of this manual, including the products and software described in it, may be reproduced, transmitted, transcribed, stored in a retrieval system, or translated into any language in any form or by any means, except documentation kept by the purchaser for backup purposes, without the express written permission of ZOTAC.

Products and corporate names mentioned in this manual may be registered trademarks or copyrights of their respective companies, and are used for identification purposes only. All trademarks are the property of their respective owners.

Every effort has been made to ensure that the contents of this manual are correct and up to date. However, the manufacturer makes no guarantee regarding the accuracy of its contents, and reserves the right to make changes without prior notice.

CAUTION:

Risk of explosion if the battery is replaced with an incorrect type. Batteries should be recycled where possible. Disposal of used batteries must be in accordance with local environmental regulations.

Table of Contents

Product specifications	3
Safety information	5
Setting up your system	5
Care during use	5
Welcome	6
Package contents	6
Getting to know your ZOTAC GAMING MEK ULTRA PC Gaming System	7
Top view	7
Rear view	8
Installing the glass side cover	10
Installing a new graphics card for GU3080C7R1B (i7+RTX3080)	12
Installing Killer Control Center	15
Configure your ZOTAC GAMING MEK ULTRA PC Gaming System	19
Configuring a wireless connection	19
Configuring a wired connection	19
Using a static IP	19
Configuring audio output	20

Product specifications

For GU3080C7R1B (i7-RTX3080)

- ❑ **Microprocessor Support**
 - ❖ Intel Core i7-9700 (eight-core 3.0GHz, up to 4.7GHz)
- ❑ **Onboard Graphics Support**
 - ❖ NVIDIA RTX3080 w/ 10GB GDDR6X for GU3080C7R1B
- ❑ **Internal Expansion:**
 - ❖ 32GB DDR4 OC 3200MHz
 - ❖ 4TB 3.5" SATA hard drive
 - ❖ 512 GB M.2 NVMe SSD
- ❑ **Networking**
 - ❖ Gigabit LAN (10/100/1000Mbps)
 - ❖ Killer AX1650 WiFi 6
 - ❖ Bluetooth 5
- ❑ **Audio**
 - ❖ Onboard 7.1 Channel Digital Audio with optical output
- ❑ **I/O**
 - ❖ 3x DisplayPort 1.4a, 1x HDMI 2.1
 - ❖ Mic/Headphone
 - ❖ 2x USB 3.1 Gen 2 Ports (1x Type-C, 1x Type-A), 6x USB 3.0 Ports, 2x USB 2.0 Ports
- ❑ **Power Supply**
 - ❖ 1000W 80+ Gold Power Supply
- ❑ **OS Pre-installed**
 - ❖ Windows 10 Home Edition, 64-bit

For GU3070C7R1B (i7-RTX3070)

❑ Microprocessor Support

- ❖ Intel Core i7-9700 (eight-core 3.0GHz, up to 4.7GHz)

❑ Onboard Graphics Support

- ❖ NVIDIA RTX3070 w/ 8GB GDDR6 for GU3070C7R1B

❑ Internal Expansion:

- ❖ 16GB DDR4 OC 3200MHz
- ❖ 2TB 3.5" SATA hard drive
- ❖ 512 GB M.2 NVMe SSD

❑ Networking

- ❖ Gigabit LAN (10/100/1000Mbps)
- ❖ Killer AX1650 WiFi 6
- ❖ Bluetooth 5

❑ Audio

- ❖ Onboard 7.1 Channel Digital Audio with optical output

❑ I/O

- ❖ 3x DisplayPort 1.4a, 1x HDMI 2.1
- ❖ Mic/Headphone
- ❖ 2x USB 3.1 Gen 2 Ports (1x Type-C, 1x Type-A), 6x USB 3.0 Ports, 2x USB 2.0 Ports

❑ Power Supply

- ❖ 1000W 80+ Gold Power Supply

❑ OS Pre-installed

- ❖ Windows 10 Home Edition, 64-bit

Safety information

Your ZOTAC GAMING MEK ULTRA PC Gaming System is designed and tested to meet the latest standards of safety for information technology equipment. However, to ensure your safety, it is important that you read the following safety instructions.

Setting up your system

- ❖ Read and follow all instructions in the documentation before operating your system.
 - ❖ Do not use this product near water or a heat source such as a radiator.
 - ❖ Set up the system on a stable surface.
 - ❖ Openings on the chassis are for ventilation. Do not block or cover these openings. Make sure you leave plenty of space around the system for ventilation. Never insert objects of any kind into the ventilation openings.
 - ❖ Use this product in environments with ambient temperatures between 0°C and 35°C.
- ☞ If you use an extension cord, please use the UL listed cord and make sure that the total ampere rating of the devices plugged into the extension cord does not exceed its ampere rating.

Care during use

- ❖ Do not walk on the power cord or allow anything to rest on it.
- ❖ Do not spill water or any other liquids on your system.
- ❖ When the system is turned off, a small amount of electrical current still flows. Always unplug all power, modem, and network cables from the power outlets before cleaning the system.
- ❖ If you encounter the following technical problems with the product, unplug the power cord and contact a qualified service technician or your retailer.
 - The power cord or plug is damaged.
 - Liquid has been spilled onto the system.
 - The system does not function properly even if you follow the operating instructions.
 - The system was dropped or the cabinet is damaged.

Welcome

Congratulations on your purchase of the ZOTAC GAMING MEK ULTRA PC Gaming System. The following illustration displays the package contents of your new MEK ULTRA PC Gaming System. If any of the below items is damaged or missed, contact your retailer.

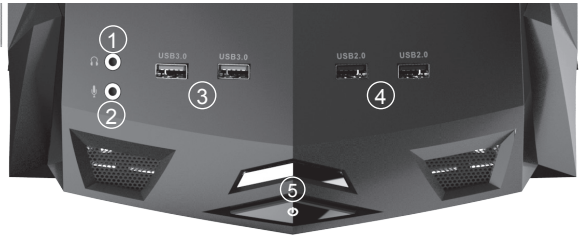
Package contents

- 1 x ZOTAC GAMING MEK ULTRA PC Gaming System
- 1 x Glass Side Cover
- 1 or 2 x Power Cord (depends on region)
- 2 x WiFi Antenna
- 1 x USB Flash Drive with Windows Recovery Image and Windows Drivers
- 1 x Quick Start Guide & Warranty Card
- 1 x User Manual (optional)



Getting to know your ZOTAC GAMING MEK ULTRA PC Gaming System

Top view



Refer to the diagram below to identify the components on this side of the system

1. Headphone/Audio Out jack

The stereo headphone jack (3.5mm) is used to connect the system's audio out signal to gaming headset.

2. Microphone jack

The microphone jack is designed to connect the microphone used for easy connection with gaming headset.

3. USB 3.0 ports

The USB 3.0 port supports the SuperSpeed USB 3.0 devices and is backwards compatible with USB 2.0/1.1 devices. Use this port for USB 3.0 devices for maximum performance with USB 3.0 compatible devices.

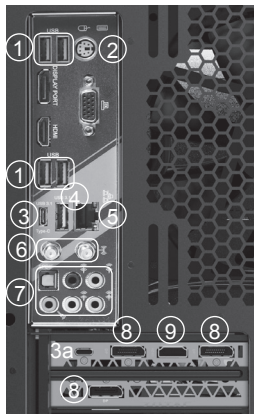
4. USB 2.0 ports

The USB (Universal Serial Bus) port is compatible with USB devices such as keyboards, mice, cameras and hard disk drives.

5. Power button

The power button turns the system ON and OFF.

Rear view



1. USB 3.0 ports

The USB 3.0 port supports the SuperSpeed USB 3.0 device. Use this port for USB 3.0 devices for maximum performance with USB 3.0 compatible devices.

2. PS2 keyboard/mouse port

The PS/2 port is used to connect with keyboard/mouse.

3. USB 3.1 Type-C port / USB Type-C (3a, Standard Display Connector) on select models

The USB 3.1 port supports the SuperSpeed USB 3.1 devices. Use this port for USB 3.1 devices for maximum performance with USB 3.1 compatible devices.

4. USB 3.1 port

The USB 3.1 port supports the SuperSpeed USB 3.1 devices. Use this port for USB 3.1 devices for maximum performance with USB 3.1 compatible devices.

5. LAN port

The eight-pin RJ-45 LAN port support standard Ethernet cables for connection to a local network.

6. WiFi antenna connectors

The WiFi antenna connector supports the included WiFi antenna.

7. Audio ports with SPDIF-out

Use the five audio ports to connect audio devices. The pink jack is for microphone. The green jack is for front speaker out signal. The blue jack is for side speaker out signal. The orange jack is for rear speaker out signal. The black jack is for center/subwoofer signal. The optical S/PDIF output enables connectivity with digital audio receivers and speakers for crystal clear digital audio and surround sound from compatible soundtracks.

8. DisplayPorts

DisplayPort supports both external (box-to-box) and internal (laptop LCD panel) display connections.

9. HDMI port

The HDMI (High Definition Multimedia Interface) port supports a UHD device such as an LCD TV or monitor to allow viewing on a larger external display.

10. Power input (IEC C20 or C14, standard power cord connection)

Connected with power cord to mains for AC input.

11. Power switch

The Power switch turns the power supply ON (I) and OFF (O).

12. Initial setup

Follow the on-screen instructions to complete the initial setup of Windows.
This process may take several minutes.

 ***Do not block ventilation outlet for warm air exhaust.***

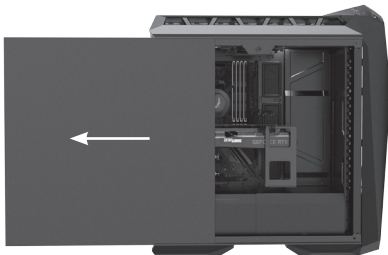
Installing the glass side cover

The MEK ULTRA PC gaming system is pre-installed with an iron side cover, users can also install the glass side cover in accessories. Please follow the instructions below to install the glass side cover.

1. Rotate and remove the two screws securing the iron side cover.



2. Gently push the iron side cover and remove it as shown below.



3. Insert the glass side cover to the side of the MEK ULTRA PC Gaming system, and ensure that the installation is in place.



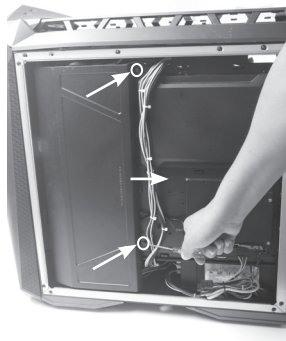
4. Use a coin to turn the screw to secure the glass side cover.



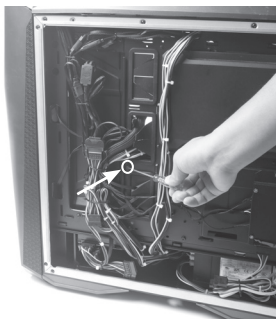
Installing a new graphics card for GU3080C7R1B (i7+RTX3080)

The RTX3080 graphics card will be pre-installed with a Z-shaped bracket in GU3030C7R1B models. If you need to install a new graphics card, please follow the instructions below to remove the pre-installed graphics card.

1. Follow the steps above to remove the side covers.
2. Release the two screws and remove the cover.



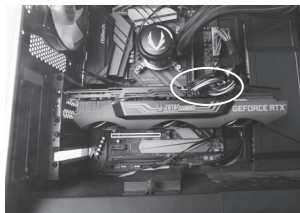
3. Remove the screw of Z-shaped bracket for RTX3080 as shown below.



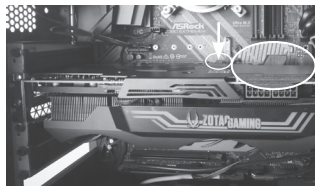
4. Locate the graphics card and release the two screws.



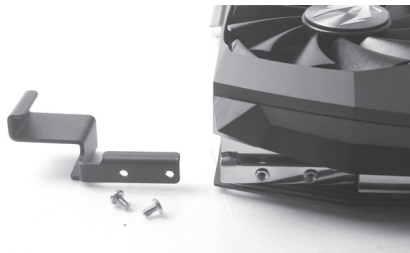
5. Release the cables of graphics card.



6. Press down and hold the buckle of graphics card, and remove the graphics card.



7. Release the two screws and remove the Z-shaped bracket.

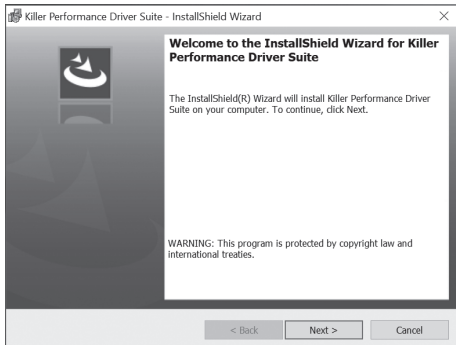


8. Install the new graphics card.

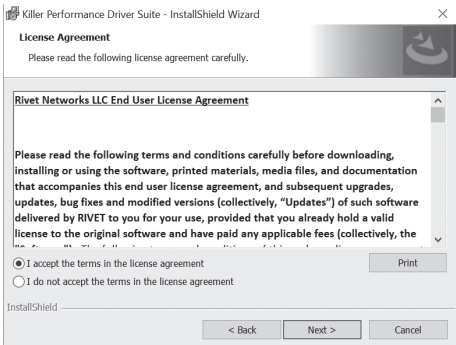
Installing Killer Control Center

Before you can use the full feature of Killer Lan, please follow the instructions below to install the Killer Control Center.

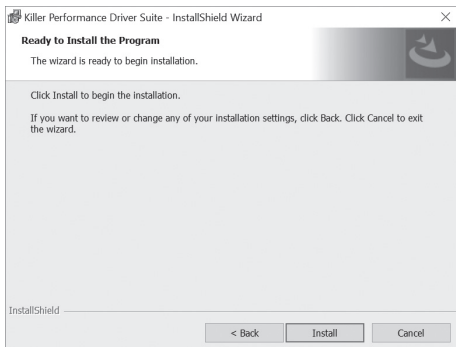
1. Run Killer Wireless Network Driver, click “Next” when the following dialog box displays.



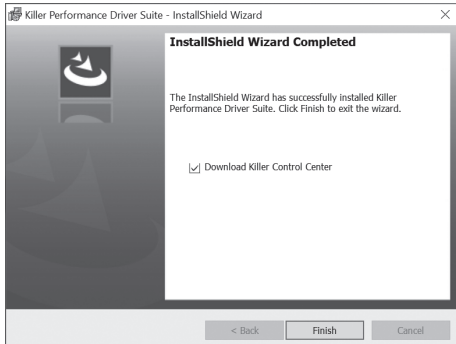
2. Accept the License agreement.



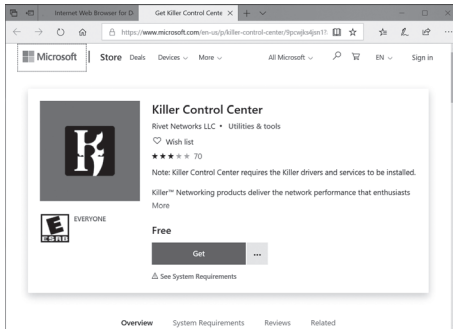
3. Click “Install” to begin the installation. (Please make sure that the network is connected before the installation)



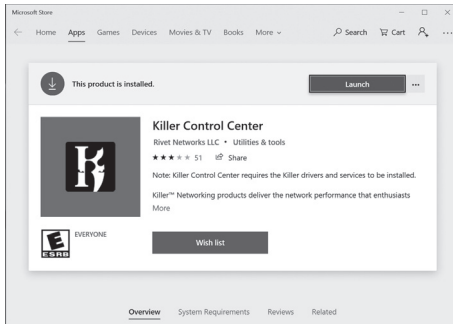
4. Check before “Download Killer Control Center”, and click “Finish”.



5. Click “Get” to download the Killer Control Center.



6. When the installation is complete, click “Launch” to run the Killer Control Center.



7. Killer Control Center displays as below.



Configuring your ZOTAC GAMING MEK ULTRA PC Gaming System

Configuring a wireless connection

Please follow the instructions below to connect to a wireless network:

1. Double-click the wireless network icon (pic) in the notification area.
2. Select the wireless network you want to connect to from the list and click Connect.

3. After connection is established, you will see “Connected.”

Note 1: For security concerns, Do NOT connect to an unsecured network, otherwise, the transmitted information without encryption might be visible to others.

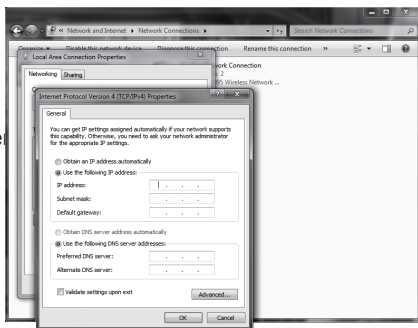
Note 2: Enter the network security key if necessary.



Configuring a wired connection

Using a static IP

1. Connect one end of the Ethernet cable to your Internet Service Provider (ISP) modem/router.
2. Connect the other end to the Ethernet port in the rear of the MEK ULTRA PC Gaming System.
3. Highlight “Internet Protocol (TCP/IP)” and click “Properties”.
4. Select “Use the following IP address”.
5. Enter your IP address, subnet mask and Default gateway.
6. Enter the preferred DNS server address if necessary.
7. After entering all of the related values, click “OK” to finish the configuration.



Configuring audio output

Follow the steps below to enable audio output when connecting the MEK ULTRA PC Gaming System to a TV or receiver via DP/HDMI adapter.

1. Access the Sound settings via the system Control Panel.
2. Under Playback devices, click the display device that corresponds with your audio compatible display.
3. Click the “Set Default” button in the lower right hand corner.
4. Click “OK” to exit the setup.

